



TECH TIPS

November 7, 2018

SpeechMike Premium Air 4000 series with firmware 4.50

Information; including software, firmware, and manuals can be found at the following link...

www.speechmike.com/premium-air/support

Did you know?

Beginning with the release of this firmware version, we provide **new custom button modes** to our customers.

After updating their firmware, they will be able to benefit from the new options, providing a new flexibility for tailoring the SpeechMike buttons in diverse IT environments.

- **SpeechMike event mode** (default)
- **Keyboard** mode: Dragon speech recognition – 2-step control (for Windows operating systems only)
- **Browser** mode (Use SpeechMike in a web browser where supported)

NEW

- **Custom 1** mode: Windows speech recognition (for Windows operating systems only)
- **Custom 2** mode: Dragon Dictate speech recognition (for Mac operating systems only)
- **Custom 3** mode: Dragon speech recognition (one button mode...for Windows operating systems only)

- With the three new Custom button modes, the SpeechMikes can be used in all potential environments **without** the need for **integration** or **driver software installation**.

- The new Custom button modes enable users to control their dictation and speech recognition application with the SpeechMike by assigning **hotkeys** to the ¹programmable SpeechMike buttons according to their individual needs.

- Users can define to send hotkeys when a button is pressed **and** when it is released. This enables to even program functions like **push-to-talk** to the SpeechMike buttons.

- In addition to the keyboard mode, the new custom button modes also enable to control the SpeechMike microphone + Record LED + the recording application with a single button click.

- The new Custom button modes enable customers to use the SpeechMikes on **Zero-clients** where no driver installation is possible and where the SpeechMike microphone and Record LED has to be controlled via the SpeechMike.

¹ Requires using the free utility Philips Speech Control / PDCC V 4.1.410.19

If you have any questions or concerns regarding this TechTip, please contact your SPS representative. www.philips.com/dictation



Benefits

- No integration required
- Flexible button programming of audio, application and text navigation commands
- Compatible with most IT environments without driver software installation

EASY Button Mode Switching

The SpeechMike Premium series now includes up to 6 different button modes. Therefore, it was required to provide an easy and intuitive option to switch between the button modes.

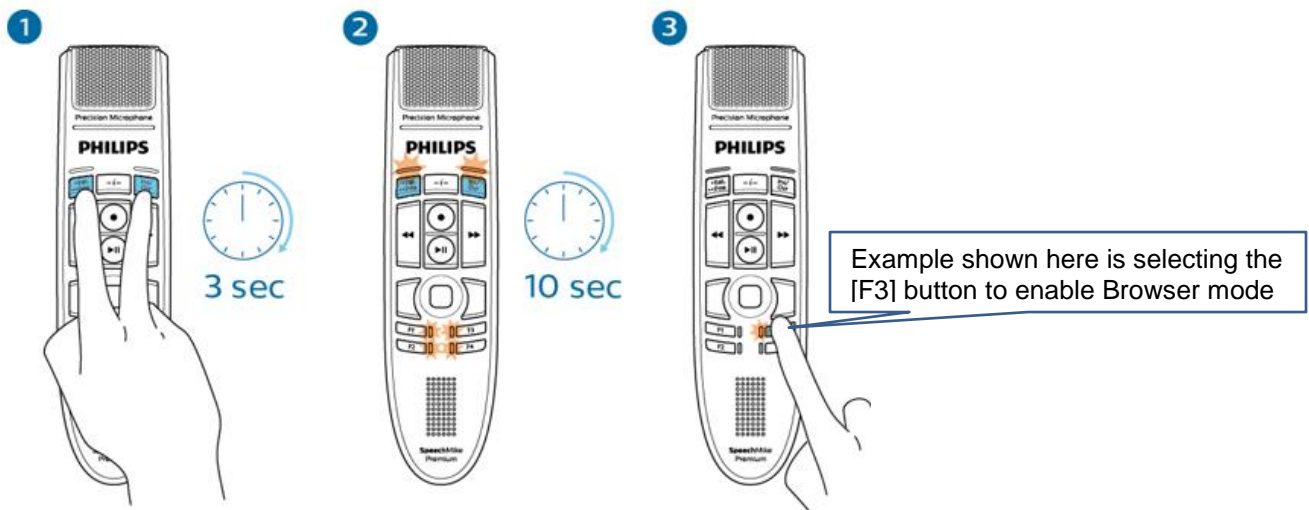
This could be realized by providing a simple two-step approach:

1. Initialize the button switch operation by pressing EOL and INS/OVR simultaneously for 3 seconds (familiar method)
The LEDs that are close to the buttons will start flashing yellow
2. Select the appropriate button that represents the intended button mode
The LED of the selected button will briefly light up.

Button assignments

SpeechMike button	Button mode
F1	SpeechMike event mode
F2	Keyboard mode
F3	Browser mode
F4	Custom 1 mode (Windows speech recognition)
EOL	Custom 2 mode (Dragon Dictate for Mac)
INS/OVR	Custom 3 mode (Dragon for Windows)

3. To check the selected button mode briefly press EOL and INS/OVR.
The LED of the corresponding button mode will light up in yellow.



If you have any questions or concerns regarding this TechTip, please contact your SPS representative. www.philips.com/dictation



Based on customer feedback the SpeechMike Premium Air firmware version 4.50 includes the following additional enhancements:

- We disable all (automatic) beeps (also the wakeup beep) if the 'Enable acoustical warnings' setting is disabled.
Description: *The wakeup beep is always heard at reconnect e.g. when picking up the SpeechMike in idle mode. This was perceived as annoying by the users, especially because they have intentionally switched off all beeps with SpeechControl.*
- The connection LEDs no longer flash if the wireless connection is active, but the USB connection is interrupted.
Description: *In earlier firmware versions the Connection LEDs flashed e.g. if the computer went into standby mode. The flashing LEDs were perceived as an annoying indication. Therefore we have removed the flashing indication and we have also changed the LED color from red to yellow.*
- **Removed low voltage vibration warning** in SMPA.
Description: *In earlier firmware versions, the SpeechMike Premium Air sent a vibration warning, if the battery voltage fell under a certain threshold level. Some users thought that this was a wireless connection problem. To avoid this misunderstanding we have removed the low voltage vibration alarm from firmware 4.50 onwards. The battery/charging LED indication remains unchanged.*
- **Improved charging behavior for empty rechargeable batteries**
Description: *With the new firmware the SpeechMike Premium Air wireless charging electronic can better cope with empty rechargeable batteries. To prevent the battery from damage the charging electronic will start with a 'trickle charging' mode for about 45 minutes, which is displayed by a flashing orange battery/charging LED on the device. If the battery has reached a certain voltage, the standard charging method is applied.*

To fully charge an empty battery via the docking station, we recommend running the charging process for approximately 6 hours in total.

Note: If the rechargeable battery is almost empty, the connection to SpeechControl is interrupted on the software side for security reasons.